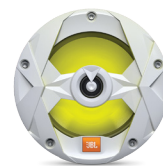
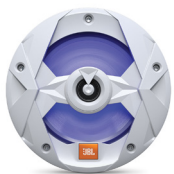




# Club Marine Speakers

Engineered for the Ultimate Sound Experience



## Light up your next boating adventure with JBL Club Marine.

JBL Club Marine Speakers are ready to take on your next outdoor adventure. These fully marinated speakers not only deliver JBL sound, but select models also feature RGB lighting to bring the sound to life. Engineered to withstand sun, salt, sea spray and wash downs, they feature sealed motor structure, UV resistant one-piece cast-polymer baskets, a sealed magnet and rubber surrounds. The polypropylene cone and balanced dome tweeter provide great bass, smooth highs and lots of output to ensure every note can be heard loud and clear.

## Features

- ▶ Ten Models to Suit All Applications and Environments
- ▶ IPx5 Rated
- ▶ Cosmetic Appeal
- ▶ Outdoor Performance
- ▶ Product Value
- ▶ RGB Lighting
- ▶ Marine Design
- ▶ Balanced Dome Tweeters
- ▶ Designed for the Elements
- ▶ Harman Standard Reliability Testing
- ▶ Individually Voiced



# Club Marine Speakers

Engineered for the Ultimate Sound Experience

## Features and Benefits

### Ten Models to Suit All Applications and Environments

Club Marine MS65W—6-1/2" (160mm) two-way marine audio multi-element speaker – White

Club Marine MS65LW—6-1/2" (160mm) two-way marine audio multi-element speaker with RGB lighting – White

Club Marine MS65B—6-1/2" (160mm) two-way marine audio multi-element speaker – Black

Club Marine MS65LB—6-1/2" (160mm) two-way marine audio multi-element speaker with RGB lighting – Black

Club Marine MS8W—8" (200mm) two-way marine audio multi-element speaker – White

Club Marine MS8LW—8" (200mm) two-way marine audio multi-element speaker with RGB lighting – White

Club Marine MS8B—8" (200mm) two-way marine audio multi-element speaker – Black

Club Marine MS8LB—8" (200mm) two-way marine audio multi-element speaker with RGB lighting – Black

Club Marine MS10LW—10" (250mm) marine audio multi-element subwoofer with RGB lighting – White

Club Marine MS10LB—10" (250mm) marine audio multi-element subwoofer with RGB lighting – Black

### IPx5 Rated

Marine-grade materials & components to suit the demands of a harsh outdoor environment with an IPx5 marine rating.

### Cosmetic Appeal

Product family look and feel to meet the needs of our JBL customers.

### Outdoor Performance

Accentuated performance at frequencies heard in an open-air environment.

### Product Value

Great performance at an affordable price point.

### RGB Lighting

Multi-color RGB LED lighting engineered to withstand the harshest environment and keep the party going all night long.

### Marine Design

Bridge mounted (grille mounted) tweeters to avoid water intrusion past the woofer cone.

### Balanced Dome Tweeters

Weather resistant tweeters deliver a smooth high-frequency response and increased power handling for highs and mids, which equates to more lifelike sound from vocals, cymbals, brass instruments and pianos.

### Designed for the Elements

Their one-piece polymer basket is designed to stand the test of time, even after long exposure to the sun and salt. Rubber surrounds offer superior edge protection and are much more reliable than foam. And a grille-mounted tweeter allows the front of the woofer cone to be sealed, protecting the motor structure from sea spray.

### Harman Standard Reliability Testing

JBL speakers have to undergo a testing process that would destroy lesser speakers. JBL freezes them, bakes them, shakes them, blasts them with ultraviolet light and drives them at full power for days at a time. In the case of our marine speakers, we add salt spray and UV to ensure that they provide years of enjoyment without missing a beat.

### Individually Voiced

For most brands, off-the-shelf speakers and a cursory approval of frequency response curves are good enough. That's not the case with JBL. We don't only listen to our speakers against the competition — we voice them against each other to ensure each line has the consistent JBL sound signature that's known and sought out by those who care about their audio. This is just part of an extensive development process undertaken by some of the best transducer engineers in the world to provide the finest listening experience at any price point.





# Club Marine Speakers

Engineered for the Ultimate Sound Experience



## What's in the Box

### Club Marine MS65LW

- 1 x Speakers with grilles, pr.
- 1 x Stainless steel mounting hardware
- 1 x Foam gasket, pr.
- 1 x RGB lighting pigtail harness, pr.
- 1 x JBL logo 2prs
- 1 x Quick Start Guide

### Club Marine MS65W

- 1 x Speakers with grilles, pr.
- 1 x Stainless steel mounting hardware
- 1 x Foam gasket, pr.
- 1 x JBL logo 2prs
- 1 x Quick Start Guide

### Club Marine MS65LB

- 1 x Speakers with grilles, pr.
- 1 x Stainless steel mounting hardware
- 1 x Foam gasket, pr.
- 1 x RGB lighting pigtail harness, pr.
- 1 x JBL logo 2prs
- 1 x Quick Start Guide

### Club Marine MS65B

- 1 x Speakers with grilles, pr.
- 1 x Stainless steel mounting hardware
- 1 x Foam gasket, pr.
- 1 x JBL logo 2prs
- 1 x Quick Start Guide

### Club Marine MS8LW

- 1 x Speakers with grilles, pr.
- 1 x Stainless steel mounting hardware
- 1 x Foam gasket, pr.
- 1 x RGB lighting pigtail harness, pr.
- 1 x JBL logo 2prs
- 1 x Quick Start Guide

### Club Marine MS8W

- 1 x Speakers with grilles, pr.
- 1 x Stainless steel mounting hardware
- 1 x Foam gasket, pr.
- 1 x JBL logo 2prs
- 1 x Quick Start Guide

### Club Marine MS8LB

- 1 x Speakers with grilles, pr.
- 1 x Stainless steel mounting hardware
- 1 x Foam gasket, pr.

- 1 x RGB lighting pigtail harness, pr.
- 1 x JBL logo 2prs
- 1 x Quick Start Guide

### Club Marine MS8B

- 1 x Speakers with grilles, pr.
- 1 x Stainless steel mounting hardware
- 1 x Foam gasket, pr.
- 1 x JBL logo 2prs
- 1 x Quick Start Guide

### Club Marine MS10LW

- 1 x Subwoofer with grille, pr.
- 1 x Stainless steel mounting hardware
- 1 x Foam gasket
- 1 x RGB lighting pigtail harness
- 1 x JBL logo 2prs
- 1 x Quick Start Guide

### Club Marine MS10LB

- 1 x Subwoofer with grille, pr.
- 1 x Stainless steel mounting hardware
- 1 x Foam gasket
- 1 x RGB lighting pigtail harness
- 1 x JBL logo 2prs
- 1 x Quick Start Guide





# Club Marine Speakers

Engineered for the Ultimate Sound Experience

## Technical Specifications

### Club Marine MS65LW

Power Handling: 75W RMS, 225W peak

Sensitivity (@ 2.83V): 92dB

Frequency Response: 50Hz – 20kHz

Impedance: 4 ohms

### Club Marine MS65W

Power Handling: 75W RMS, 225W peak

Sensitivity (@ 2.83V): 92dB

Frequency Response: 50Hz – 20kHz

Impedance: 4 ohms

### Club Marine MS65LB

Power Handling: 75W RMS, 225W peak

Sensitivity (@ 2.83V): 92dB

Frequency Response: 50Hz – 20kHz

Impedance: 4 ohms

### Club Marine MS65B

Power Handling: 75W RMS, 225W peak

Sensitivity (@ 2.83V): 92dB

Frequency Response: 50Hz – 20kHz

Impedance: 4 ohms

### Club Marine MS8LW

Power Handling: 150W RMS, 450W peak

Sensitivity (@ 2.83V): 92dB

Frequency Response: 30Hz – 20kHz

Impedance: 4 ohms

### Club Marine MS8W

Power Handling: 150W RMS, 450W peak

Sensitivity (@ 2.83V): 92dB

Frequency Response: 30Hz – 20kHz

Impedance: 4 ohms

### Club Marine MS8LB

Power Handling: 150W RMS, 450W peak

Sensitivity (@ 2.83V): 92dB

Frequency Response: 30Hz – 20kHz

Impedance: 4 ohms

### Club Marine MS8B

Power Handling: 150W RMS, 450W peak

Sensitivity (@ 2.83V): 92dB

Frequency Response: 30Hz – 20kHz

Impedance: 4 ohms

### Club Marine MS10LW

Power Handling: 250W RMS, 750W peak

Sensitivity (@ 2.83V): 89dB

Frequency Response: 25Hz – 500Hz

Impedance: 4 ohms

### Club Marine MS10LB

Power Handling: 250W RMS, 750W peak

Sensitivity (@ 2.83V): 89dB

Frequency Response: 25Hz – 500Hz

Impedance: 4 ohms

